



---

# Assumption Grammar's SEAG Entrance Assessment 2024 Familiarisation

---

# Welcome to P7 Pupils and Parents



- Presentation
- Visit your allocated hall/room/area
- Entrances/Exits
- See the location of the toilets
- Opportunity to clarify concerns with a member of staff

**SEAG** Schools'  
Entrance  
Assessment  
Group

# Saturday, 16<sup>th</sup> and 23<sup>rd</sup> November 2024

---

- We look forward to welcoming **218** P7 pupils to our school for the SEAG Entrance Assessment.
- As far as possible, children will be in a hall/room with some children from their primary school.
- Pupil Cards are available for download on the SEAG website.





# Information

**SEAG** Schools'  
Entrance  
Assessment  
Group

- You should have received a letter with drop-off/pick-up times and allocated entrance/area
- Expectations of Parents and Pupils on the Days of the SEAG Entrance Assessment
- FAQs for Parents whose Children will sit the SEAG Entrance Assessment 2024
- Contingency Planning or 'What If' Scenarios - A Guide for Parents/Guardians



# Getting Organised - Reminders

- Primary school uniform is advised
- Pupil Card (download/print from SEAG Dashboard)
- Log onto your SEAG account and go to Dashboard. Then click on your child's name. From here you will see a green banner saying 'Download Pupil Card';
- Printing the Pupil Card is the best option but if you do not have access to a printer, you can download the card and save this to a mobile device.
- Highlighters are permitted but must not be used on the Answer Sheet. These will not be provided so children must bring their own if they wish to use them.
- Rulers, calculators, mobile phones, earbuds, watches/ Smartwatches and other electronic devices are not permitted
- Clock in the room
- Water will be provided. Please be aware, Assumption Grammar School is a nut-free zone.
- **It is very important you check your child's details on the SEAG website as an erroneous DOB can impact on results;**



# Drop-Off

- Drop-off time is **9:15am**
- Allow plenty of time for your journey.
- Your letter tells you your designated entrance.
- The maximum speed is 5mph.



# Entrances

The letters sent out will indicate which entrance to arrive at:

**Pupil Entrance A (to the right of the roundabout)**

**Pupil Entrance B (Main Entrance at front of the building)**

**Pupil Entrance C –Sports Hall (MH2) - past the main entrance to the right of the building**



# Drop-Off

- If travelling by foot, your parent(s) can escort you to and from the drop-off for your zone.
- Arrival Time is 9:15 to give us time to bring your child to the designated room and for details to be checked;
- You will be guided by attendants who will be wearing coloured sashes. Entrances will be clearly marked but if unsure, ask one of the attendants.
- Parents will leave their child to correct door where he/she will be registered and immediately brought to their rooms by our guides.
- Parents **will not** be permitted to enter the building at **any** time during the morning.

**SEAG** Schools' Entrance Assessment Group





# What happens next?

- In your room the Invigilator will take your Pupil Card and show you to your seat.
- There will be two HB pencils and an eraser on your desk, as well as blank paper.
- There will be a clock in the room.
- You will then have time to get settled and visit the toilet before the Assessment begins.





# Entrance Assessment - Practice Test Section

- Materials issued/checks made
- 10.00 am: Practice Test Section
- 5 questions in English (P1 - P5)
- 5 questions in Maths (P6 - P10)
- Guided by Invigilator
- P1 - P10 answers are written on the Answer Sheet but aren't timed and don't count towards the final mark

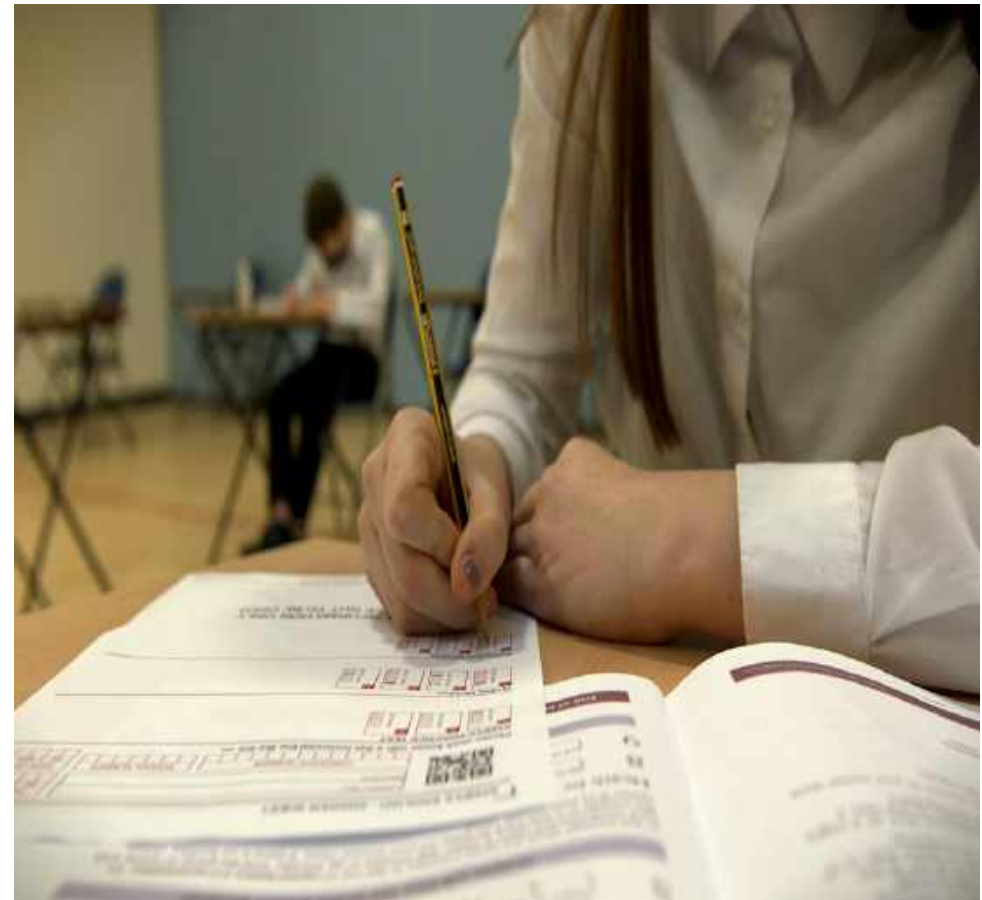




# Entrance Assessment - Main Test Section

- 56 questions in 60 minutes\*
- English: Q1 - Q28
- Maths: Q29 - Q56
- Multiple choice and free response (see official SEAG Practice Papers 1 and 2)
- **Pupils can choose to start with the English (Gaeilge) questions or the Maths questions**
- Work quickly and carefully
- Extra time is not allowed for a toilet break. It will be allocated for sickness/distress.

\* *Some pupils with Access Arrangements may have additional time - normally 75 minutes instead of 60 minutes*





# Entrance Assessment Test Section - Timings



- Pupils are told the start time and finishing time.
- The Invigilator will advise all pupils about the time:
  - when they are about halfway through
  - when they have about 20 minutes left
  - when they have about 10 minutes left
- After 60\* minutes, pupils will be told to stop, put their pencils down and not to talk.
- \*Timings will differ for pupils with extra time allowed.



# Pick-Up

---

- Pick-up time – 11:30am
- When collecting your child, please form a queue at the relevant exit and be ready to present your Information Card again. Your child will be brought to you as quickly as possible. Be aware, some pupils will still be writing so we ask you to be quiet outside.
- Please be patient while we do this. There are obvious Child Protection issues here, which is why a card is needed on collection.
- Do not move until directed by staff. Remember - 5mph.

# Timescale for the Day

---

**SEAG** Schools  
Entrance  
Assessment  
Group

- Arrive at Assumption from 9:15am
- Children brought to their Assessment Rooms but can avail of the toilets;
- Materials distributed and Bio details checked (9:40am)
- Preamble and Practice Test – 10:00am-10:15am
- Main Test – 10:15am-11:15am (11:30am Access students finish)
- Completion between 11:30am and 11:45am depending on your area;
- Children will be brought to the exits and collected by their parent/guardian.



# P7 Pupils

---



- Lots of Staff and Senior Students have volunteered to help.
- Please follow their instructions at all times.
- Be aware of other pupils and remain quiet and in your seat unless told otherwise.
- Our job is to help you do your best.



# What happens if your child only sits one paper?

- SEAG is very clear that its Entrance Assessment consists of two papers.
- A pupil who only takes one paper (i.e., either Paper 1 or Paper 2 but not both) will not have completed the full Entrance Assessment.
- Such pupils will, however, have their “single paper” marked by GL Assessment and will receive a Statement of Outcomes.
- Outcomes for pupils who only sit one paper will have the designation “e” (for estimate) immediately after the Outcome, *e.g. Total Standardised Age Score TSAS 196e; Band 4e.*



# Access Arrangements

- Applications were made online.
- Decisions made by independent Access Panel.
- Communicated to Assumption Grammar School.
- Small number still outstanding.
- Mrs Orsi will liaise directly with parents.



**SEAG** Schools' Entrance Assessment Group



# 'What If' Scenarios



- Various 'What If' scenarios included in Information Pack covering:
  - illness/other valid reason for absence
  - late arrival
  - withdrawal
  - something unexpected e.g., injury
- Parents, please keep your phone close by on the two Saturday Assessment mornings AND advise the second, emergency contact to do the same
- **Tel: 02897562250 or email  
admin@assumption.Ballynahinch.ni.sch.uk**

# SEAG Outcomes

- 
- Available from Saturday, 25<sup>th</sup> January 2025 on SEAG website.
    - **Total Standardised Age Score (TSAS)** from 132 - 282
    - **Band 1 - 6**
    - English/Gaeilge SAS (69 - 141)
    - Maths SAS (69 - 141)
    - Cohort Percentile Ranking
    - *A further breakdown of outcomes is also provided, including e.g. number of questions answered correctly in English/Gaeilge, in Maths and in each Paper.*

# Familiarisation



**SEAG** Schools' Entrance Assessment Group

- Teachers available for questions
- Visit your allocated hall/room
- Remember no visible aids in rooms
- See the location of the toilets
- Opportunity to clarify concerns with a member of staff
- Our best wishes to all P7 pupils

*Good Luck!*

A vibrant green four-leaf clover is positioned to the right of the text 'Good Luck!', with its stem extending downwards.

# Some final words for the P7s...

- Try to get a good night's sleep;
- Eat breakfast;
- Remember to wear your uniform;
- Try not to worry;
- Remind your parents to bring your Information Card;
- If you have medication, bring it with you and ensure it is labelled;
- Parents – please be patient at the end of the test as we have to stagger the departure of rooms and traffic can be heavy.
- **Plan something nice after the Assessments (parents and children).**



**SEAG** Schools' Entrance Assessment Group

